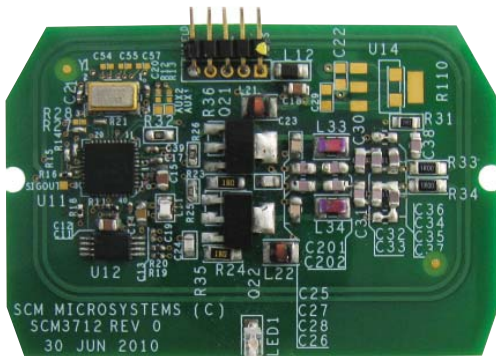


# SCM3712

## Contactless Reader Board



### COMPACT

Size optimized for space constraint equipment

### COMPLIANT

ISO 14443 A/B, FeliCa, NFC Reader/Writer Mode and Peer-To-Peer mode. Full feature support of various contactless tags and NFC devices

### FAST

Optimized transaction times for highest throughput

### SIMPLE INTEGRATION

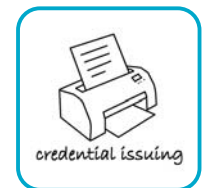
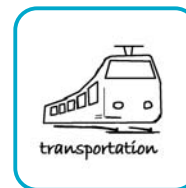
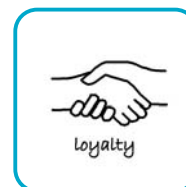
PC/SC standards-compliant driver for Windows®, Linux and MAC

### FLEXIBLE

Configuration options for various use applications

### Typical Applications

Event ticketing, retail loyalty as well as vending, public transport and mobile payment are a wide range of NFC based applications the SCM3712 is suitable for. Especially the combination of contactless reader and NFC peer-to-peer capability enables the upgrade of actual RFID use applications to a whole variety of fully NFC featured commercial solutions.



For example, a direct and reliable two-way communication between two devices can be established, allowing a mobile phone to be used as a smart credential when presented to an SCM3712 powered NFC terminal. Additionally it is enabling applications such as loyalty couponing or point redemption. For a maximum end user acceptance the SCM3712 reader board family fully supports the features of a wide range of contactless cards, tokens, key fobs and NFC devices like mobile phone stickers, NFC labels or NFC powered smart phones.

The SCM3712 EA version even enables the use in issuing devices like card or label/smart poster printers for on-the-fly tag personalization. The SCM3712 family also works with Identive's widely installed contactless SCL reader/token family, including the SCL011 and SCL3711 devices. Solution developers and system integrators easily can reuse and expand existing integrations based on other Identive products.

The available NFC solutions development kit containing the SCM3712 NFC reader board enables application developers and system integrators to accelerate time to market of NFC technology-based readers and terminals that support device-to-tag and peer-to-peer applications.

### Technical Features

Parameter	Value / Description		
Order Number	SCM3712 905254	SCM3712 NFC 905312	SCM3712 EA 905260
RF Carrier Frequency	13.56MHz ± 50 ppm		
Supported Standards	ISO 14443 A/B, NFC IP-1, ISO 18092, ECMA 340		
Supported RF transmission speeds	106 / 212 / 424 kbps		
Supported Tag ICs	NFC forum tag type 1 through Identive-specific APDU; NFC forum tag type 2 through PC/SC-defined APDUs NFC forum tag type 3 through Identive-specific APDU; NFC forum tag type 4 through PC/SC APDUs ISO/IEC 14443-4 PICC type A and type B MIFARE (Classic, Ultralight, Ultralight C, MIFARE PLUS , DESFire, DESFire EV1 2/4/8k), Non-Secure FeliCa™, Innovision Topaz		
Supported NFC Modes	Reader Writer Mode	Reader Writer Mode Peer to Peer Passive	Reader Writer Mode Peer to Peer Passive
Host Interface	USB 2.0 (USB 1.1 / 3.0 compliant), 150cm / 59 Inch USB cable, Type A connector		
Host Communication Speed	12 Mbps (USB2.0 full speed)		
Host OS Support	Microsoft Windows® 2000/XP/Vista/7 (32/64Bit) / Microsoft Windows® CE 5.0/6.0 / MacOS, Linux		
Host Communication Driver	PC/SC 2.01.09		
Indicator	Green LED		
Power Supply	USB Bus powered		
Power Consumption	<200mA 260µA Power down mode	<100mA 260µA Power down mode	<100mA 260µA Power down mode
Reading Distance	< 50 mm / < 1.97 Inch depending on tag type and size	< 45 mm / < 1.77 Inch depending on tag type and size	< 65 mm / < 2.56 Inch depending on tag type and size
Reader PCB Size	60 x 40.3 x 10 mm ± 0.13mm / 2,36 x 1.59 x 0,39 Inch ± 0.005 Inch		
Antenna PCB Size	integrated	integrated	92.7 x 49.5 x 4 mm 3.65 x 1.95 x 0.16 Inch
Antenna Cable Length	NA	NA	200 mm / 7.87 Inch
Antenna Connector	NA	NA	ULTRA MINI COAX
Weight	5.5 g ± 5% / 0,012 lb ± 5%	5.5 g ± 5% / 0,012 lb ± 5%	19.5 g ± 5% / 0.043 lb ± 5%
Operating Temperature Range	0° to +60°C / +32 to +140 F		
Storage Temperature Range	-20 to +60°C / -4 to +140 F		
Operating humidity range	Up to 95%RH non condensing		
Firmware Version	2.7		
Certifications / Compliances	WHQL, RoHs compliant		

Technical data are subject to change without notice.



### Contacts Identive ID Infrastructure Division

**Identive GmbH**  
Oskar-Messter-Str. 13  
85737 Ismaning  
Germany

Phone + 49 89 9595 5000  
Fax + 49 89 9595 5555  
sales@identive-infrastructure.com

**Identive Group, Inc**  
1900-B Carnegie Avenue  
Santa Ana, CA 92705  
USA

Phone + 1 888 446 9008  
Fax + 1 888 446 1210  
scmsales@identive-infrastructure.com

**Identive KK**  
GoogolPlex Millennium Building 6F  
4-4-20 Shiba, Minato-ku,  
Tokyo, 108-0014, Japan

Phone + 81 3 6414 6611  
Fax + 81 3 6414 6612  
sales@identive-infrastructure.co.jp

**Identive GmbH**  
Unit 11, 4607-11,  
The CENTRE  
99 Queen's Road Central  
Hong Kong

Phone + 91 44 2254 0020  
Fax + 91 44 2254 0029  
sales@identive-infrastructure.com